

Features:

- Isolated Power Package
- Rugged Construction
- HR Military Screening Available

600V, 25 Amps 3 Phase Rectifier Bridge

Schematic Diagram

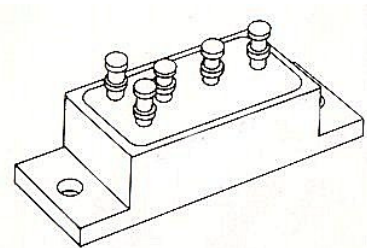
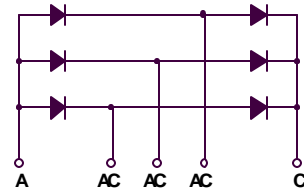


Table 1: Maximum Ratings Per Leg ③ 25°C

Parameter	Max Rating
Peak Repetitive Reverse Voltage, V_{RPM}	600 V
Peak Working Reverse Voltage, V_{RWM}	
DC Reverse Blocking Voltage, V_R	
Average Forward Current, I_o @ 55°C	25 A
Average Forward Current, I_o @ 100°C	18.5A
Max. Surge Current, I_{FSM} @ $T_j=55^\circ\text{C}$, sinusoidal	150 A
Operating and Storage Junction Temp. Range	-65 to +150 °C
Thermal Resistance, junction to case	2.5 °C/W
Thermal Resistance Junction to Ambient	20 °C/W

Table 2: Electrical Characteristics per leg ③ 25°C

Parameter	Symbol	Conditions	Limits		Units
			Min	Max	
Reverse Current	I_{R1}	$V_R = 600V$		2	μA
Reverse Current	I_{R2}	$V_R = 600V, T_A = 100^\circ\text{C}$		200	μA
Forward Voltage	V_{F1}	$I_{FM} = 39A$		1.3	V
Max. Recovery Time	t_{rr}	$I_F = 0.5A, I_r = 1.0A, I_{rr} = 0.25A$		2.0	μsec

Mechanical Dimensions

