

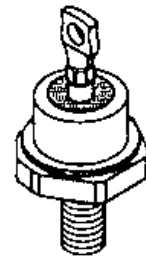
Description:

The SES816 and SES817 are High Power and High Temperature Rectifiers packaged in a hermetic sealed DO-5 package ideally suited for applications where high reliability is required.

High Temperature Operation
70 Amps Current
High Reliability

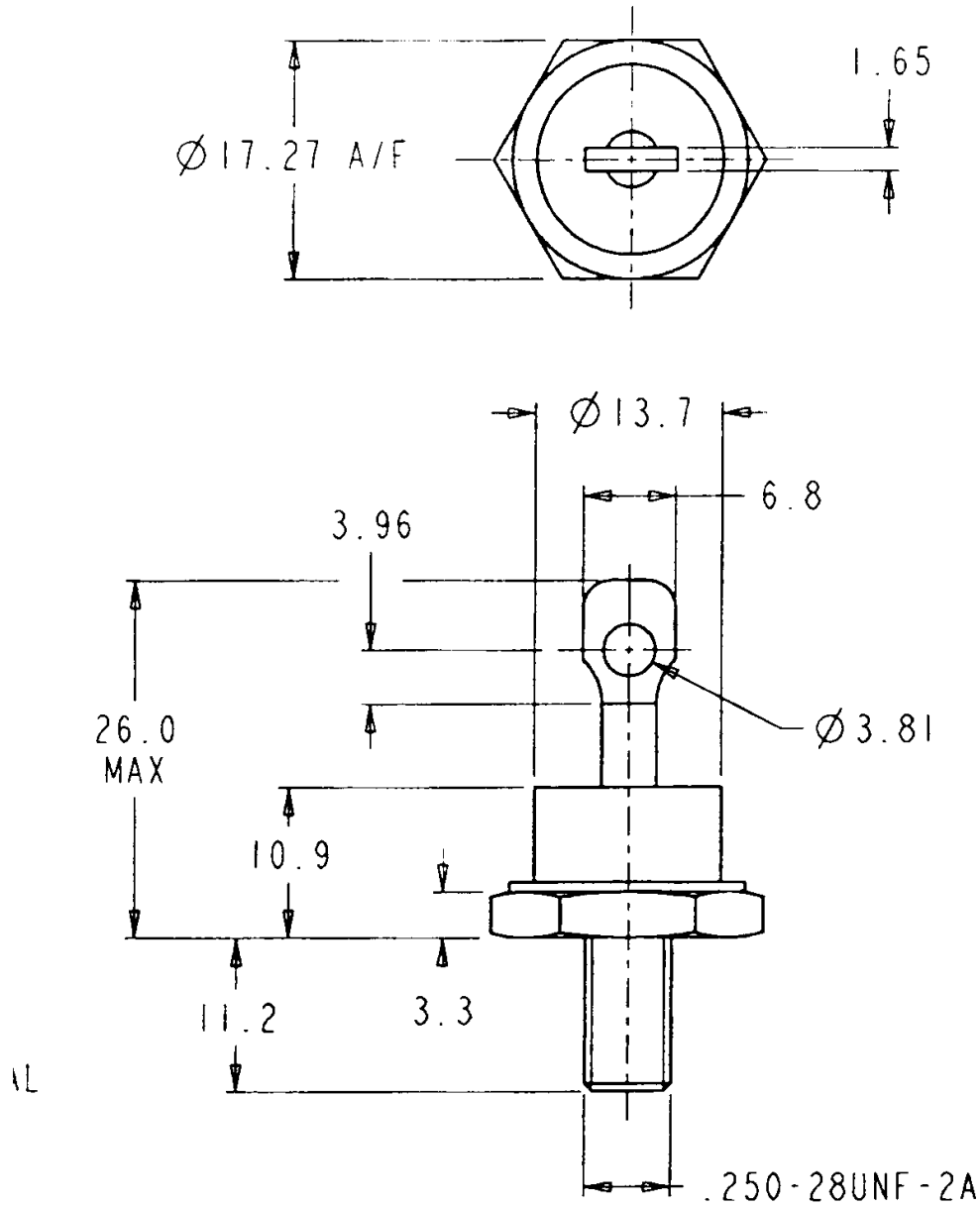
Features

- Hermetic Package
- High Temperature Operation
- Low Forward Voltage
- High Surge Current Capability



Maximum Ratings @ 250°C unless otherwise indicated

PARAMETER	CONDITION	SYMBOL	RATING
Average on-state current	Half sine wave 200°C stud temperature	$I_{F(AV)}$	70A
RMS current, maximum		I_{RMS}	110A
DC forward current	200°C stud temperature	I_F	87A
Peak one-cycle surge (non-Repetitive) of forward current	10ms duration 60% V_{RRM} re-applied $V_R \leq 10$ volts	I_{FSM}	700A 805A
Maximum permissible surge energy	10 ms duration 60% V_{RRM} re-applied $V_R \leq 10$ volts 3ms duration 60% V_{RRM} re-applied	I_t^2	2450A ² s 3240A ² s 1790A ² s
Repetitive voltages		V_{RWM}/V_{RRM}	400V
Non-repetitive voltage		V_{RSM}	500V
Peak forward voltage drop	@ 220A	V_F	1.2V
Peak reverse current	@ V_{RRM}	I_R	20mA
Max junction operating temperature		T_J (Max)	+250°C
Storage temperature range		T_{STG}	-55°+250°C
Thermal resistance, junction to case for a device with a maximum forward volt-drop characteristic		R_{jc}	0.45°C/W



All Dimmensions are Nominal
except where indicated

Mounting Torque: 2.8 - 4.5N.m

SES816 Normal Stud Cathode - SES817 Reverse Stud Anode